

BONALDO

Doge

Designer: **Mauro Lipparini**

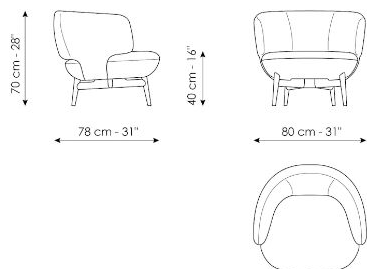


Il nome della famiglia di poltrone si ispira alla figura del Doge, il capo di governo ai tempi della Repubblica Serenissima veneziana. La presenza di due lembi che partendo dal bracciolo avvolgono la seduta ricordano infatti il copricapo del Doge, conferendo alla poltrona distinzione e autorevolezza nella forma. L'evocazione di un'estetica anni '70, insieme a un'esplicita contemporaneità per concezione e materiale, colloca Doge in un mondo dove regnano eleganza e semplicità di disegno. La poltrona Doge è disponibile in tre modelli. La poltrona con base rivestita rende la

configurazione compatta ed equilibrata nelle proporzioni, conferendo già dal primo sguardo un senso di comfort in ogni occasione di utilizzo. Le altre due varianti sono leggere e sollevate: una più modernista, con base centrale a quattro gambe e meccanismo girevole, e l'altra con importanti gambe in legno massello. Le tre diverse versioni trasmettono nel modo di porsi un'immediata confidenzialità personale, rivelandosi interpreti disinvolti sia nell'arredo residenziale sia nel mondo dell'hospitality.



Scheda tecnica

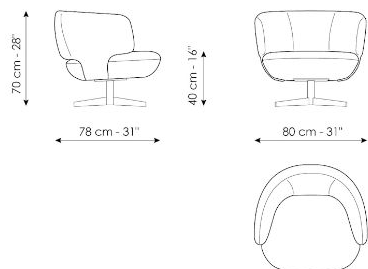


Doge - base in legno

Larghezza: 78cm

Profondità: 80cm

Altezza: 70cm

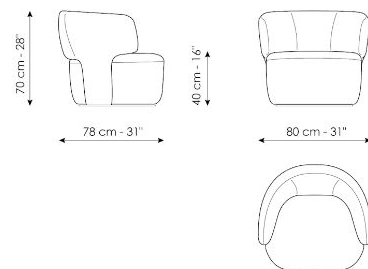


Doge - base in metallo

Larghezza: 78cm

Profondità: 80cm

Altezza: 70cm



Doge - base rivestita

Larghezza: 78cm

Profondità: 80cm

Altezza: 70cm

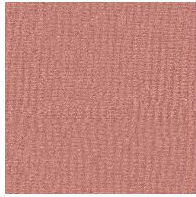
Finishes

RIVESTIMENTO

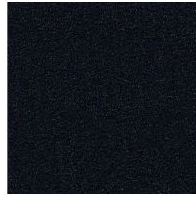
Tessuto - 900



Tessuto - Azimut
9B02



Tessuto - Azimut
9B08



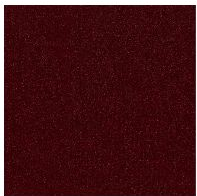
Tessuto - Azimut
9B17



Tessuto - Azimut
9B22



Tessuto - Azimut
9B26



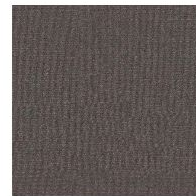
Tessuto - Azimut
9B36



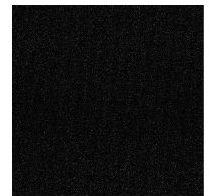
Tessuto - Azimut
9B39



Tessuto - Azimut
9B42



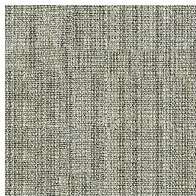
Tessuto - Azimut
9B44



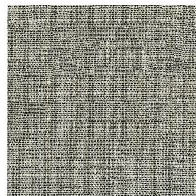
Tessuto - Azimut
9B48



Fabric - Newco
9B65



Fabric - Newco
9B66



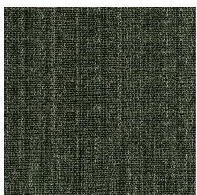
Fabric - Newco
9B67



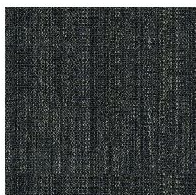
Fabric - Newco
9B68



Fabric - Newco
9B69



Fabric - Newco
9B70



Fabric - Newco
9B71

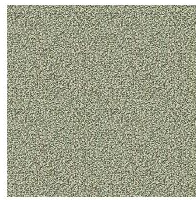


Fabric - Newco
9B72

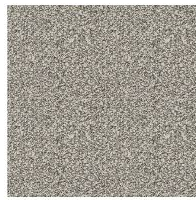
Tessuto - Must



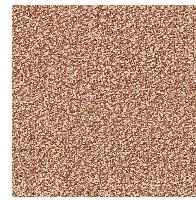
Tessuto - Boemian
MC40



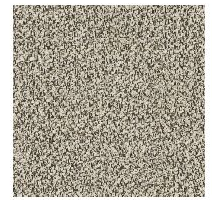
Tessuto - Boemian
MC43



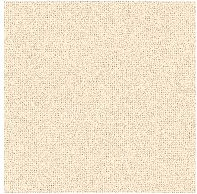
Tessuto - Boemian
MC46



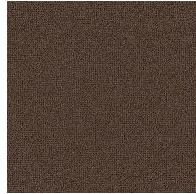
Tessuto - Boemian
MC47



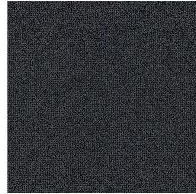
Tessuto - Boemian
MC49



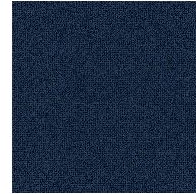
Tessuto - Rico
MA02



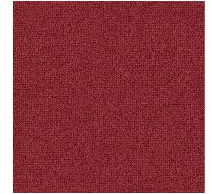
Tessuto - Rico
MA04



Tessuto - Rico
MA07



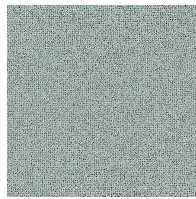
Tessuto - Rico
MA09



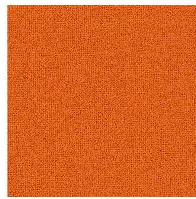
Tessuto - Rico
MA11



Tessuto - Rico
MA20



Tessuto - Rico
MA22



Tessuto - Rico
MC39



Tessuto - St. Moritz
MC60



Tessuto - St. Moritz
MC61



Tessuto - St. Moritz
MC62



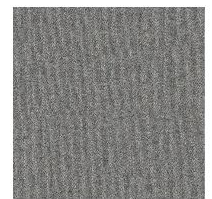
Tessuto - St. Moritz
MC67



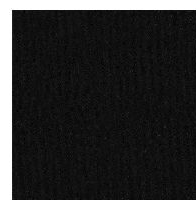
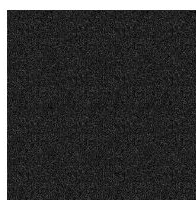
Tessuto - St. Moritz
MC69



Tessuto - St. Moritz
MC76



Tessuto - St. Moritz
MC81

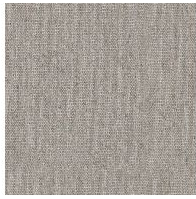


Tessuto - St. Moritz
MC83

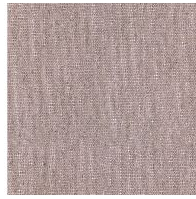
Tessuto - St. Moritz
MC85



Tessuto - Flora
MD30



Tessuto - Flora
MD31



Tessuto - Flora
MD32



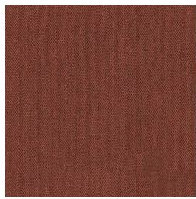
Tessuto - Flora
MD34



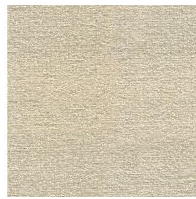
Tessuto - Flora
MD35



Tessuto - Flora
MD37



Tessuto - Flora
MD39



Fabric - Lucky
MD58



Fabric - Lucky
MD59

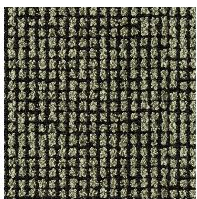


Fabric - Lucky
MD60



Fabric - Lucky
MD61

Tessuto - Special



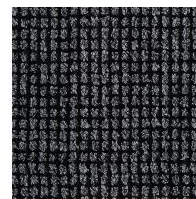
Tessuto - Brionne
SP19



Tessuto - Brionne
SP20



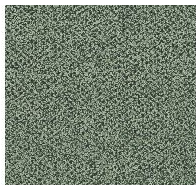
Tessuto - Brionne
SP21



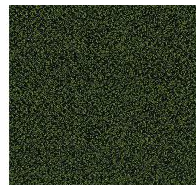
Tessuto - Brionne
SP22



Tessuto - Brionne
SP23



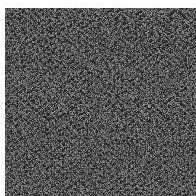
Tessuto - Rella
SP01



Tessuto - Rella
SP04



Tessuto - Rella
SP05



Tessuto - Rella
SP06



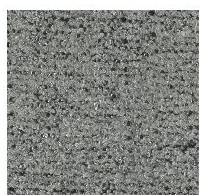
Tessuto - Rella
SP07



Tessuto - Diamon
Frisé
SP31



Tessuto - Diamon
Frisé
SP33



Tessuto - Diamon
Frisé
SP36



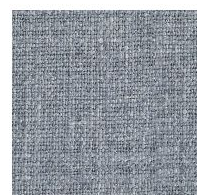
Tessuto - Diamon
Frisé
SP34



Tessuto - Diamon
Frisé
SP38



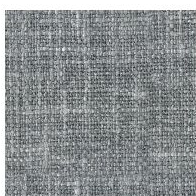
Tessuto - Baia
SP45



Tessuto - Baia
SP48



Tessuto - Baia
SP50



Tessuto - Baia
SP51



Tessuto - Baia
SP52



Fabric - Jurga
SP53



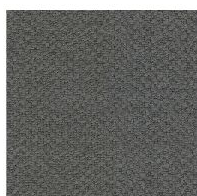
Fabric - Jurga
SP54



Fabric - Jurga
SP55



Fabric - Jurga
SP56



Fabric - Jurga
SP57

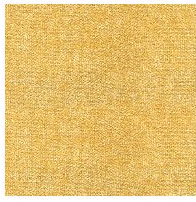


Fabric - Jurga
SP58

Tessuto - 800



Tessuto- Pastello
8D69



Fabric - Pastello
8D68



Fabric - Pastello
8D67



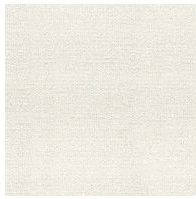
Fabric - Pastello
8D66



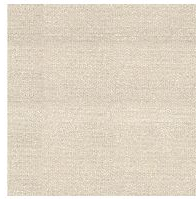
Fabric - Pastello
8D65



Fabric - Pastello
8D64



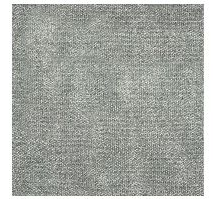
Fabric - Pastello
8D63



Fabric - Pastello
8D62



Fabric - Pastello
8D61



Fabric - Pastello
8D60



Fabric - Pastello
8D59



Fabric - Pastello
8D58



Fabric - Pastello
8D57



Fabric - Pastello
8D56



Fabric - Pastello
8D55



Fabric - Pastello
8D54



Fabric - Pastello
8D53



Fabric - Pastello
8D52

Tessuto - Class



Fabric - Hyle
EB55



Fabric - Hyle
EB56



Fabric - Hyle
EB57



Fabric - Hyle
EB58



Fabric - Hyle
EB59



Fabric - Hyle
EB60



Fabric - Hyle
EB61



Fabric - Hyle
EB62



Fabric - Hyle
EB63



Fabric - Hyle
EB64

BASE

Legno

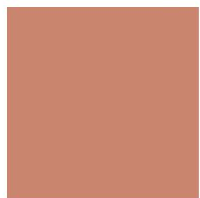


Legno massello
Noce americano



Legno massello
Frassino carbone

Metallo Plus



Metallo verniciato
Rame opaco



Metallo verniciato
Ottone opaco



Metallo verniciato
Bronzo opaco

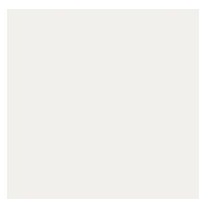


Metallo verniciato
Piombo opaco

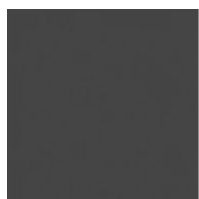


Metallo verniciato
Oro perlato opaco

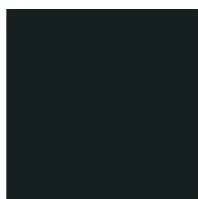
Metallo



Metallo verniciato
Bianco opaco



Metallo verniciato
Supreme anthracite



Metallo verniciato
Nero opaco

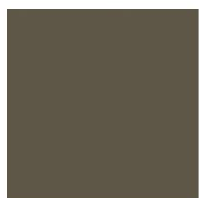


Metallo verniciato
Tortora opaco

Metallo Special



Metallo finitura
Clouded chrome



Metallo finitura
Brown nickel



Metallo finitura
Dark nickel

Materiali, tessuti, colori e finiture sono puramente indicativi e possono variare da quelli attualmente rappresentati. Potete trovare la collezione completa di tessuti e pelli nel sito dedicato

